

Control Circuit Limit Switch

Type VC40A

Publication Number: LS003/1211

Application

The rugged, low cost VC40A switch is used with a suitable operating ramp, to limit the travel of electric lifts and skiphoists etc. requiring accurate positioning at low speeds. It is supplied with normally-closed contacts and an earth safety screen.

Operation

The switch is operated by the application of at least 0.9kg pressure against the roller, through a distance of approximately 25mm. Allowance is made for up to 22mm follow-through.

Installation

The switch case has integral brackets offering three-hole fixing either on the back face or the side opposite the arm. This gives options in the direction of arm travel and thus of the plane in which the operating ramp can be mounted. The arm has approximately 19mm of lateral adjustment on its shaft and is clamped at the desired angle, and may be mounted on either side.

Construction

The switch is housed in an orange moulded glass-filled polycarbonate case. The transparent cover is in clear polycarbonate, hinged at the bottom and opened by screwdriver pressure at the top. The lever arm is in passivated zinc steel and the roller is a synthetic elastomer moulding.

Contacts

Silver plated hard-drawn copper with self cleaning wiping action. All terminals are push-on-type including the centre earth shield.

Contact Rating

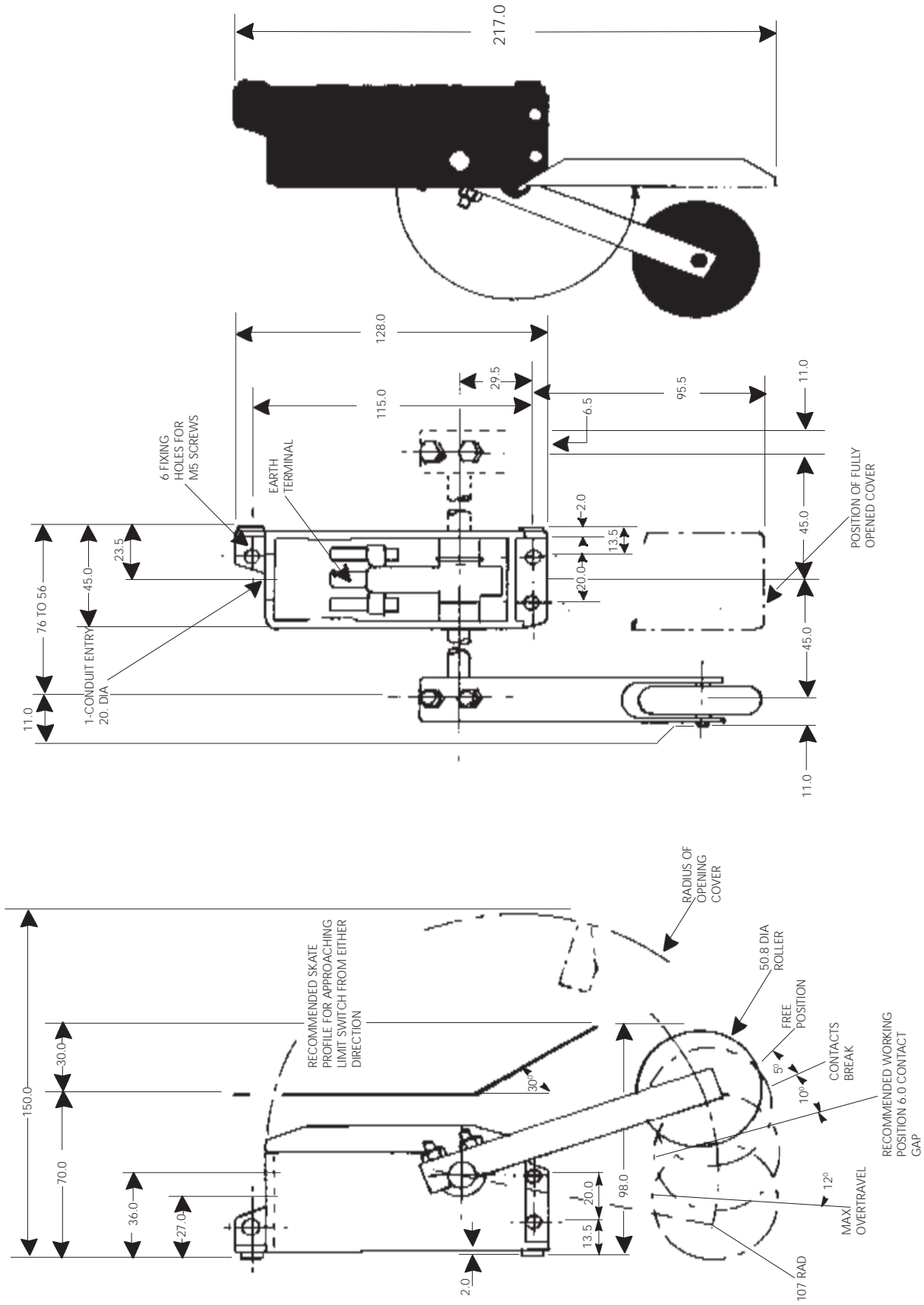
5A @240V a.c., 2A @240V d.c.

Weight

270g.

Approvals

Operation is in full accordance with the relevant provisions of EN81:Part 1 : 1998, CSA and other recognised standards.



All dimensions in mm

VC40A CONTROL CIRCUIT LIMIT SWITCH