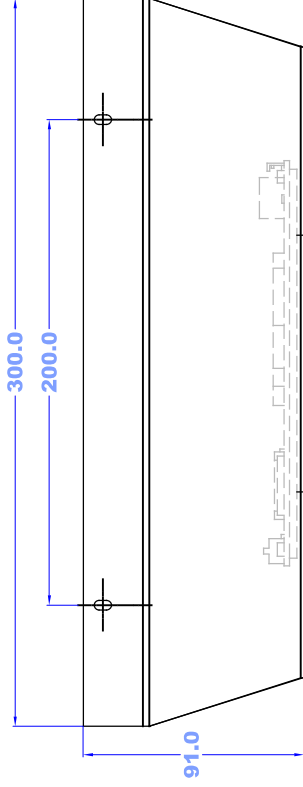


PRODUCTION RELEASE

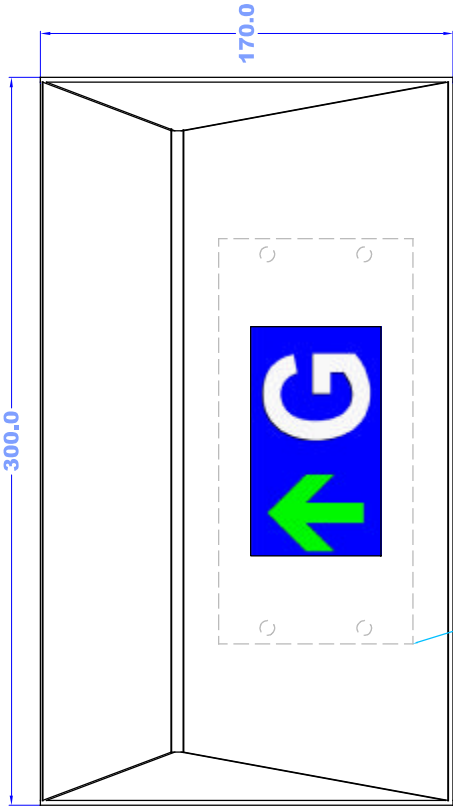
This document is suitable for series production. All paper copies are UNCONTROLLED. Refer to PLM system for latest controlled copy.

H 4 5 6 7 8

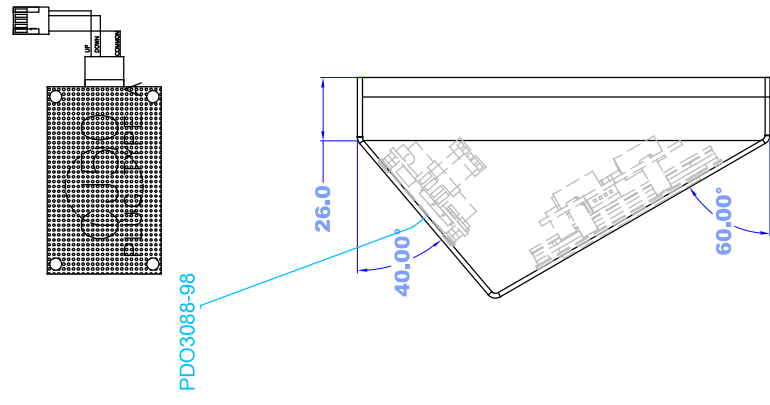
Angled Vanguard Lip C1L 4.3"	
Qty	Part No Description
0.05	176071-202512 SS SHT 2.0 x 2500 x 1250 POLISH
0.02	176401-152512 CR ZINTEC SHT 1.5 X 2500 X 1250 MM
2	002097-000372 Gong Mesh
1	002069-504350 C1L 4.3" Display
8	401170-104020 M4x20mm Weld Stud
4	401170-104008 M4x8mm Weld Studs
8	404111-040000 M4 Fullnut
8	403111-040000 M4 Washer
8	403121-040000 M4 Grover
2	408110-105160 M5 Hankbush



TOP VIEW



FRONT VIEW



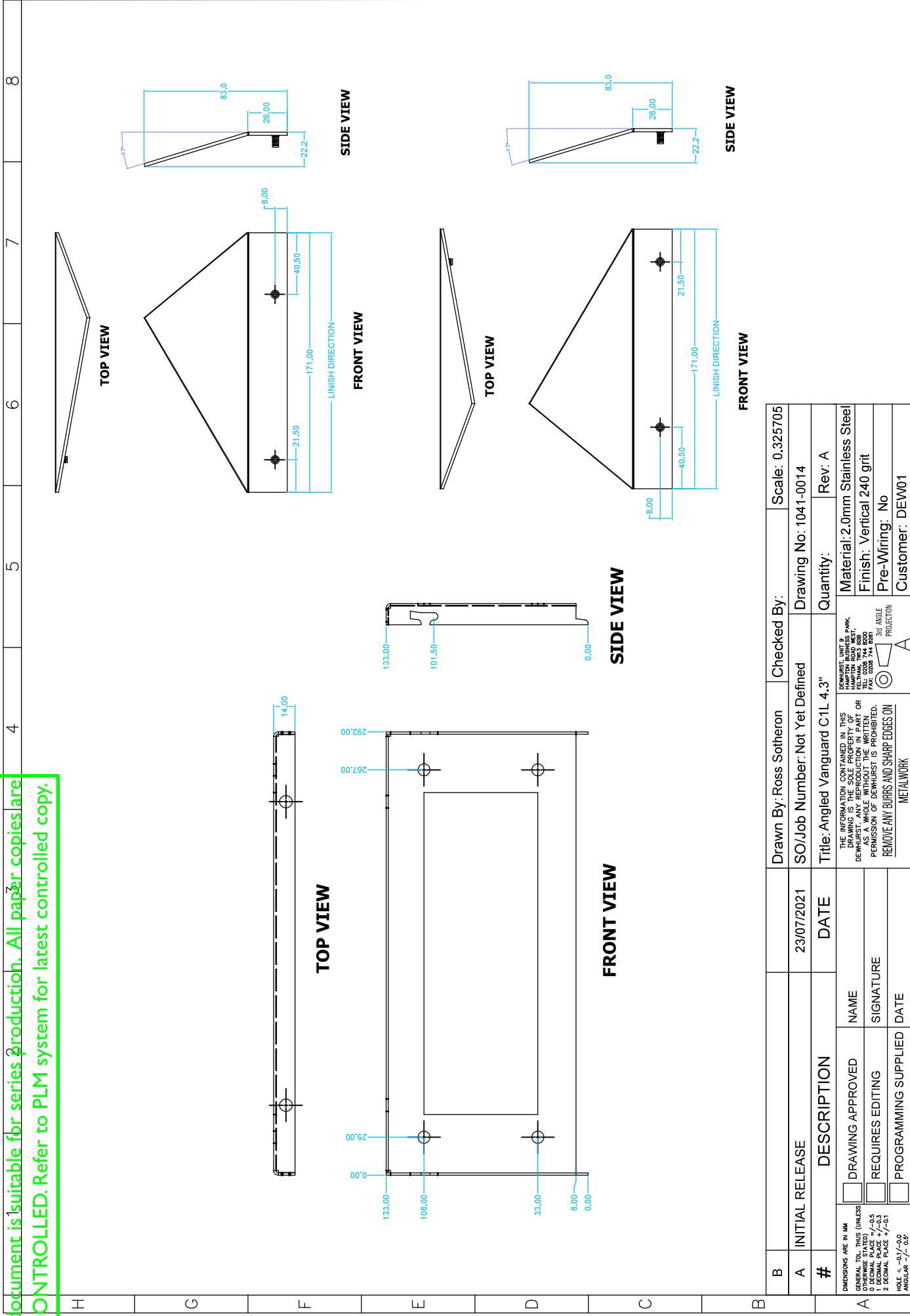
SIDE VIEW

B	Drawn By: Ross Sotherton	Checked By:	Scale: 0.341620
A	INITIAL RELEASE	SO/Job Number: Not Yet Defined	Drawing No: 1041-0014
#	DESCRIPTION	DATE	Quantity: Rev. A
DIMENSIONS ARE IN MM GENERAL TOL. THIS (UNLESS OTHERWISE SPECIFIED) 0 DECIMAL PLACE +/-0.5 1 DECIMAL PLACE +/-0.3 2 DECIMAL PLACE +/-0.1 HOLE +/-0.0/-0.0 ANGULAR +/-0.5		THE INFORMATION CONTAINED IN THIS DRAWING IS THE SOLE PROPERTY OF DEWURST. ANY REPRODUCTION IN PART OR AS A WHOLE WITHOUT THE WRITTEN PERMISSION OF DEWURST IS PROHIBITED. REMOVE ANY BURRS AND SHARP EDGES ON METALWORK	
DRAWING APPROVED NAME SIGNATURE		Material: 2.0mm Stainless Steel Finish: Vertical 240 grit Pre-Wiring: No Customer: DEW01	

DEWURST UNIT 9
 HAMILTON BUSINESS PARK
 FELTNA, T901 001
 TEL: 0204 744 000
 FAX: 0204 744 000
 3rd ANGLE PROJECTION

PRODUCTION RELEASE

This document is suitable for series production. All paper copies are UNCONTROLLED. Refer to PLM system for latest controlled copy.



B	INITIAL RELEASE	23/07/2021	Drawn By: Ross Sotherton	Checked By:	Scale: 0.325705
A	DESCRIPTION	DATE	SO/Job Number: Not Yet Defined	Title: Angled Vanguard C1L 4.3"	Drawing No: 1041-0014
#	DRAWING APPROVED	NAME	Quantity:	Rev. A	Material: 2.0mm Stainless Steel
	REQUIRES EDITING	SIGNATURE			Finish: Vertical 240 grit
	PROGRAMMING SUPPLIED	DATE			Pre-Wiring: No
					Customer: DEW01

DIMENSIONS ARE IN MM
 GENERAL TOL. THIS (UNLESS OTHERWISE SPECIFIED):
 0 DECIMAL PLACE +/-0.5
 1 DECIMAL PLACE +/-0.3
 2 DECIMAL PLACE +/-0.1
 HOLE +/-0.0/-0.0
 ANGULAR +/-0.5